

capri  
BY FRASER  
hotel residences  
BERLIN / GERMANY

Capri by Fraser, Berlin/Germany

Scharrenstraße 22  
10178 Berlin  
Germany

T. +49 30 20 07 70 1888

F. +49 30 20 07 70 1999

E: [reservations.berlin@capribyfraser.com](mailto:reservations.berlin@capribyfraser.com)

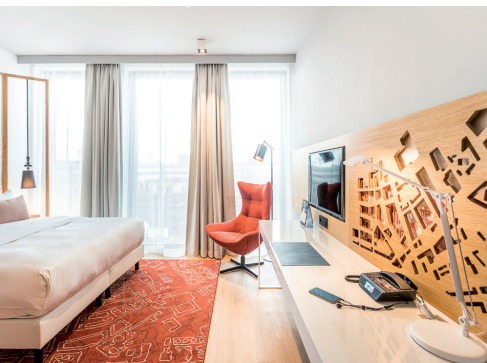


## *Life, Styled* Capri by Fraser

Urban inspired. High tech. Intuitive. The freedom to choose how and when you want to work, live and play. A hotel residence designed with your round-the-clock lifestyle in mind.

Capri by Fraser Berlin / Germany is a fun, colorful and social design-led hotel uniquely inspired by its destination mixing cutting-edge design with local influences creating a place to work and play to different beat.

Conveniently located for business and pleasure. The Alexanderplatz is only moments away and is surrounded by some exciting dining, shopping and entertainment options.



STUDIO DELUXE



POW WOW

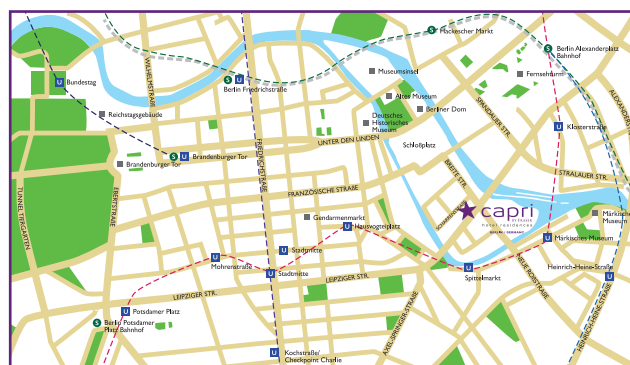


HOT SPOT

## ACCOMODATION

143 spacious units comprising of the following categories:

	SIZE (sqm)
Studio Deluxe	23-28
Studio Executive	29-30
Studio Premier	31-35
One Bedroom Deluxe	35-42



\* Not drawn to scale

## FACILITIES AND SERVICES

### Amenities

- 24/7 Gym with state of the art facilities
- 24/7 "Spin & Play" laundry room
- Drinx Bar
- Restaurant

### Meeting & Conference Facilities

- Pow Wow 1\*
- Pow Wow 2\*
- Hotspot

### Service & Offerings

- 24/7 Reception
- Complimentary high-speed Wi-Fi
- Complimentary digital access to local and international publications
- Fully furnished hotel residence with separate or integrated living and bedroom areas
- Fully equipped kitchenette ^
- Daily housekeeping services
- Self-adjustable heating- and cooling system
- Malin + Goetz bathroom amenities
- Airport transfer\*
- Lifts to all floors
- Wheelchair friendly residence

\*Charges apply

^Selected apartments

## DIRECTIONS

From the airports:

### Driving:

- From Schönefeld International Airport: via the A113, take the A100 and the exit Tempelhofer Damm, follow the B96, take the Lindenstraße, Axel-Springer-Straße and B1 to Scharrenstraße
- From Tegel International Airport: Take the Saatwinkler Damm, Ellen-Epstein-Straße, Heidestraße, B96 and B1 to Petriplatz, then drive to Scharrenstraße

### Taxi:

- From Schönefeld International Airport: Estimated 40 Minutes, depending on the traffic situation
- From Tegel International Airport: Estimated 30 Minutes, depending on the traffic situation

### Public Transportation:

- From Schönefeld International Airport: take Deutsche Bahn RE7 express train to Alexanderplatz, then change to U2 to Märkisches Museum, from there it is only a few minutes' walk
- From Tegel International Airport: take Bus X9 to Ernst-Reuter-Platz and change to U2 to Märkisches Museum, from there it is only a few minutes' walk

## CHAIN CODE: FI

SABRE	315057
AMADEUS	BERCFB
WORLDSPAN	TXLCA
GALILEO/ APOLLO	D9102